

Addy Herman A Cradles

SKU: MBAH-ACRADLEPR-1.5

Recommended Tools:

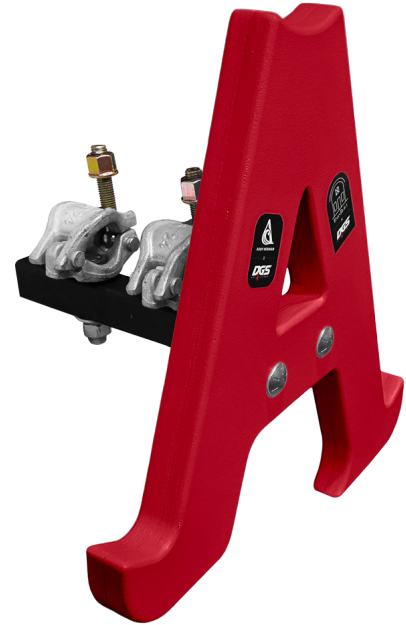
- ☐ Compact Drill/Driver
- ☐ 3/4" Wrench or Socket

Step 1:

The A Cradles arrive with some hardware already assembled. First, remove the **Flat Washers**, **Lock Washers**, and **Hex Nuts** from each **Carriage Bolt** on the A Cradle "A."

Step 2:

Attach the **Stem with Scaffold Clamps** to the **Carriage Bolts** so that the scaffold clamps are toward the top. Secure each bolt with a **Flat Washer**, **Lock Washer**, and **Hex Nut**. Use a **Power Drill with 3/4" Socket** to tighten until the carriage bolts are flush with the front of the A.



| Part Number | Part Description | Quantity |
|-------------|-----------------------------|----------|
| CUSTOM | A Cradle "A" | 2 |
| CUSTOM | Stem with Scaffold Clamps | 2 |
| 97000A529 | 1/2" x 2-1/2" Carriage Bolt | 4 |
| 288987 | 1/2" Lock Washer | 4 |
| 425022 | 1/2" Flat Washer | 4 |
| 201825 | 1/2" Hex Nut | 4 |

Need help?

Call 1-800-932-3339 or
Email info@gymsupply.com